

NPBWR1 Antibody (C-term)
Affinity Purified Rabbit Polyclonal Antibody (Pab)
Catalog # AP18352b

Specification

NPBWR1 Antibody (C-term) - Product Information

Application	WB,E
Primary Accession	P48145
Other Accession	NP_005276.2
Reactivity	Human
Host	Rabbit
Clonality	Polyclonal
Isotype	Rabbit IgG
Calculated MW	36103
Antigen Region	221-250

NPBWR1 Antibody (C-term) - Additional Information

Gene ID 2831

Other Names

Neuropeptides B/W receptor type 1, G-protein coupled receptor 7, NPBWR1, GPR7

Target/Specificity

This NPBWR1 antibody is generated from rabbits immunized with a KLH conjugated synthetic peptide between 221-250 amino acids from the C-terminal region of human NPBWR1.

Dilution

WB~~1:1000

E~~Use at an assay dependent concentration.

Format

Purified polyclonal antibody supplied in PBS with 0.09% (W/V) sodium azide. This antibody is purified through a protein A column, followed by peptide affinity purification.

Storage

Maintain refrigerated at 2-8°C for up to 2 weeks. For long term storage store at -20°C in small aliquots to prevent freeze-thaw cycles.

Precautions

NPBWR1 Antibody (C-term) is for research use only and not for use in diagnostic or therapeutic procedures.

NPBWR1 Antibody (C-term) - Protein Information

Name NPBWR1

Synonyms GPR7

Function Interacts specifically with a number of opioid ligands. Receptor for neuropeptides B and W, which may be involved in neuroendocrine system regulation, food intake and the organization of other signals. Has a higher affinity for neuropeptide B.

Cellular Location

Cell membrane; Multi-pass membrane protein.

Tissue Location

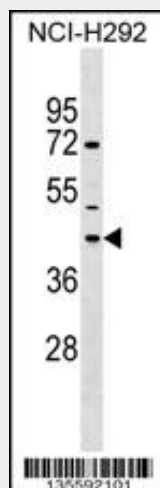
Found in cerebellum and frontal cortex. Detected at high levels in hippocampus, amygdala and trachea; at moderate levels in fetal brain, pituitary gland and prostate. Not in caudate, accumbens, kidney or liver. Also detected at high levels in lung carcinoma

NPBWR1 Antibody (C-term) - Protocols

Provided below are standard protocols that you may find useful for product applications.

- [Western Blot](#)
- [Blocking Peptides](#)
- [Dot Blot](#)
- [Immunohistochemistry](#)
- [Immunofluorescence](#)
- [Immunoprecipitation](#)
- [Flow Cytometry](#)
- [Cell Culture](#)

NPBWR1 Antibody (C-term) - Images



NPBWR1 Antibody (C-term) (Cat. #AP18352b) western blot analysis in NCI-H292 cell line lysates (35ug/lane). This demonstrates the NPBWR1 Antibody detected the NPBWR1 protein (arrow).

NPBWR1 Antibody (C-term) - Background

NPBWR1 interacts specifically with a number of opioid ligands. Receptor for neuropeptides B and W, which may be involved in neuroendocrine system regulation, food intake and the organization of other signals. Has a higher affinity for neuropeptide B.

NPBWR1 Antibody (C-term) - References

Luttrell, L.M. Mol. Biotechnol. 39(3):239-264(2008)

Lambert, N.A. Sci Signal 1 (25), RE5 (2008) :
Cottrell, S., et al. J. Urol. 177(5):1753-1758(2007)
Mazzocchi, G., et al. J. Clin. Endocrinol. Metab. 90(6):3466-3471(2005)
Zaratin, P.F., et al. Mol. Cell. Neurosci. 28(1):55-63(2005)